

INFERTILITY & ART (TEST TUBE BABY TECHNIQUE)



World class facility with state-of-the-art IVF infrastructure with individualized air handling unit + HEPA filters + SS modular OT walls in embryology and andrology lab

- Ovulation Induction
- IUI- Intrauterine Insemination
- Reproductive Surgery: Laparohysteroscopy for evaluation of infertility
- IVF- In Vitro Fertilization
- Assisted Hatching
- Genetic Counselling
- Frozen Embryo Transfer
- Cryopreservation
- ICSI -Intra Cytoplasmic Sperm Injection
- Andrology Services
- Surgical Sperm Retrieval
- Family-friendly labour and delivery suites
- Expert in high risk deliveries with continuous monitoring
- Epidural and pain management through in-house anaesthesiologists
- Neonatal Intensive Care Unit (NICU)

Success Cases by CIMS IVF team



Ms. Rashmi Raval from Ahmedabad conceived with IVF at 40 years age

IVF TEAM

Dr. Tushar Shah
MD (Obst. & Gynaec), DGO
IVF Specialist
Mo.+91 98250 07667
tushar.shah@cimshospital.org

Dr. Mehul Damani
MD (Obst. & Gynaec)
IVF Specialist
Mo. +91 98250 50020
mehul.damani@cimshospital.org

Dr. Dharmesh Kapadia
MBBS, Master of Clinical Embryology
Clinical Embryologist
Mo.+91 98790 30295
dharmesh.kapadia@cimshospital.org



IN VITRO FERTILIZATION

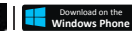


CIMS Hospital

Regd Office: Plot No.67/1, Opp. Panchamrut Bunglows,
Nr. Shukan Mall, Off Science City Road, Sola, Ahmedabad - 380060.
Ph. : +91-79-2771 2771-72 Fax: +91-79-2771 2770

IVF Helpline : +91 - 75750 22822

For appointment call : +91-79-3010 1008
Mobile : +91-98250 66661 or email on opd.rec@cimshospital.org
"CIMS Hospital" (India) application available

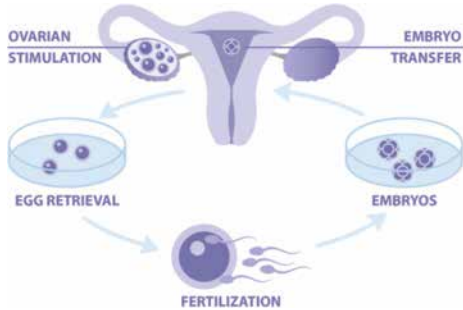


CIMS Hospital Pvt. Ltd. | CIN : U85110GJ2001PTC039962 | info@cims.org | www.cims.org

Ambulance & Emergency : +91-98244 50000, 97234 50000



IN VITRO FERTILIZATION (IVF)



In vitro fertilization (IVF) is a process by which an egg is fertilized by sperm outside the body: in vitro ("in glass"). The process involves monitoring and stimulating a woman's ovulatory process, removing an ovum or ova (egg or eggs) from the woman's ovaries and letting sperm fertilize them in a liquid in a laboratory. The fertilized egg (zygote) is cultured for 2–6 days in a growth medium and is then implanted in the same or another woman's uterus, with the intention of establishing a successful pregnancy.

IVF IS USEFUL TO TREAT THE FOLLOWING PATIENTS

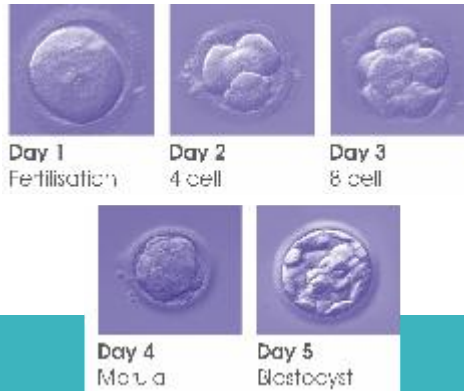
- Blocked or damaged fallopian tubes
- Male factor infertility including decreased sperm count or motility
- Women with ovulation disorders, premature ovarian failure, uterine fibroids
- Women who have had their fallopian tubes removed
- Individuals with a genetic disorder
- Unexplained infertility

Success Cases by CIMS IVF team



Ms. Dipti Batwitya From Dubai conceived with IVF (h/o multiple IVF failure at different fertility centers)

BASIC STEPS



- Monitoring and stimulation of the development of healthy egg(s) in the ovaries
- Collection of the eggs
- Securing the sperm
- Combining the eggs and sperm together in the laboratory and provide the appropriate environment for fertilization and early embryo growth
- Transferring embryos into the uterus

HOW SUCCESSFUL IS IVF ?

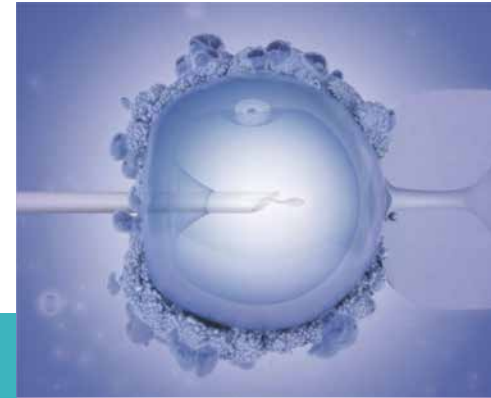
The success rate of IVF depends on a number of factors including reproductive history, maternal age, cause of infertility, and lifestyle factors.

Success Cases by CIMS IVF team



Ms. Mamta Bhanushali from Mumbai blessed with a baby girl with surrogacy (h/o hysterectomy at 29 years age)

HOW MANY EMBRYOS SHOULD BE CREATED OR TRANSFERRED?



The number of embryos transferred typically depends on the number of eggs collected and maternal age. As the rate of implantation decreases as women age, more eggs may be implanted depending on age to increase the likelihood of implantation. However, a greater number of eggs transferred increases the chances of having a multiple pregnancy. Multiple pregnancy means that a woman has two or more babies in her uterus.

INTRACYTOPLASMIC SPERM INJECTION (ICSI)

Intracytoplasmic Sperm Injection (ICSI) is an In Vitro Fertilization procedure in which a single sperm is injected directly into an egg. ICSI is often used when semen quality is a problem, there are few sperm, or if fertilization attempts during prior IVF cycles failed.

Success Cases by CIMS IVF team



Ms. Monika Modi from Ahmedabad conceived with IVF (h/o multiple ivf failure at different fertility centers)